



Wandsworth

BUSINESS GUIDE & DIRECTORY 2017/18

Building an even stronger Wandsworth



BATTERSEA REACH

LONDON'S AWARD WINNING RIVERSIDE DESTINATION

LIFE AT THE WATER'S EDGE

Battersea Reach is an award-winning development situated on the banks of the River Thames. With excellent transport links into the City and a host of on-site facilities and amenities, this thriving community is the perfect place to enjoy London riverside living.

A selection of 1, 2 and 3 bedroom apartments and penthouses available at Battersea Reach.

Please call now for further information or to arrange an appointment

Tel: **020 3627 5949** Email: **BatterseaReachSales@stgeorgeplc.com**

Unit 3 Kingfisher House, Juniper Drive, Wandsworth, London SW18 1TX



Berkeley
Group

Proud to be a member of
the Berkeley Group of companies



St George
Designed for life

GREYSTAR®

REDEFINING EXCELLENCE IN APARTMENT LIVING

www.greystar.com

Greystar is a leading, fully integrated real estate company offering expertise in investment management, development, and property management of student, build-to-rent, multi-family and senior rental housing properties. We focus on the quality of our residents' experience and the long-term placemaking of our developments. In bringing our multi-family model to

London's emerging Build to Rent sector, Greystar draws on over 25 years of experience – we currently manage over 410,000 homes and associated amenities in over 130 markets globally. In the United States, Greystar has been ranked as the largest apartment operator for the last seven years and is now also the largest apartment developer.

CURRENT PROJECTS **IN EUROPE**



SAILMAKERS, LONDON: 327 units



CHAPTER, LONDON: 4,509 units



GREENFORD, LONDON: 1,965 units



AMSTERDAM, NETHERLANDS: 1,776 units



ROTTERDAM, NETHERLANDS: 612 units



HOLENDRECHT, NETHERLANDS: 1,566 units

PRINCE OF WALES DRIVE

BATTERSEA · LONDON SW8

Introducing Prince of Wales Drive, a brand new collection of highly specified, spacious 1, 2 and 3 bedroom apartments and commercial space just moments from Battersea Park, Zone 1 and Battersea Power Station.

Prince of Wales Drive is a focal point for the rapid transformation within the regeneration area of 'Nine Elms on the South Bank'.

St James and St William have already invested heavily in the area and have delivered great commercial opportunities at Riverlight and the soon to be completed Albert Embankment.

PROUD TO BE A MEMBER OF THE



Berkeley
Group

St William
Designed for life



PRINCE OF WALES DRIVE



NEW TUBE STATION JUST

5 MINUTES

WALK AND ONLY 2 TO
BATTERSEA PARK STATION



11 BUILDINGS WITH

955

1, 2 & 3 BEDROOM
APARTMENTS



MORE THAN

100,000FT²

OF COMMERCIAL SPACE,
A1, A3, B1 & D1 USES



JUST

180M

FROM THE BATTERSEA
POWER STATION

AN EXCEPTIONAL OPPORTUNITY

The commercial units at Prince of Wales Drive are set amongst 11 distinctive buildings at ground and lower ground level. Most units offer floor-to-ceiling height glazing with dual aspect outlooks and frontages onto public walkways.

Prince of Wales Drive provides access to both underground and overground stations less than 5 minutes' walk away and the new Northern Line extension, in Battersea Power Station, due to open in 2020, will cut journey times to the City and West End to just under 15 minutes*.

With Battersea Park a 2 minute walk away, over 150 new cafés, shops and restaurants at Battersea Power Station just around the corner and landscaped gardens, a café and gym facilities on-site, Prince of Wales Drive offers all the leisure activities an employee may need.

It is the ideal time to gain a foothold in one of the most exciting Zone 1 redevelopments in recent times with Apple now at Battersea. Prince of Wales Drive is set to become a thriving business destination for years to come.

FOR FURTHER INFORMATION

Call **020 7091 2534**

Email **sales@princeofwalesdrive.co.uk**

Visit **princeofwalesdrive.co.uk**



Computer generated image, indicative only.



Computer generated image, indicative only.

Computer generated image, indicative only.

* All times are based on travelling at 7.30am on a weekday. Sources: tfl.gov.uk and Google maps.



BUILDING LANDMARK DEVELOPMENTS IN THE LONDON BOROUGH OF WANDSWORTH



PUTNEY, SW15

OTHER LONDON SQUARE DEVELOPMENTS

London Square is delighted to be building in Wandsworth, with our award-winning development, London Square Putney, a contemporary scheme of 1, 2 and 3-bedroom apartments and penthouses designed by leading architects Allford Hall Monaghan Morris.

With a £2 billion development pipeline, we are on target to dominate the London market, building 1,000 homes a year, ranging from homes for first-time buyers, to cool city apartments, smart family homes, grand restorations and conversions. Each scheme is bespoke, combining inspiring architecture, clever design and specification, and the highest standards of energy efficiency.

For more information on our portfolio or to join our award-winning team, please contact us.

**CALL 01895 627333 OR VISIT
WWW.LONDONSQUARE.CO.UK**



CALEDONIAN ROAD, N7



THE STAR AND GARTER, TW10



CANADA WATER, SE16

www.londonsquare.co.uk





PLEASE NOTE:
This publication is wholly or partially funded by the advertisers herein and the publisher. It is provided at no charge to the council.

PUBLISHED BY: BURROWS COMMUNICATIONS LIMITED
Cantium House, 2nd Floor, Railway Approach, Wallington SM6 0DZ
t: 020 8773 3000 f: 020 8669 0301
e: postmaster@burrows.co.uk www.burrows.co.uk

OUR ADVERTISERS:

We gratefully acknowledge the support of all the firms whose advertisements appear in these pages. Without their help we would not be able to produce this business guide. As a reciprocal gesture we have pleasure in drawing the attention of our readers to their announcements, but wish to make it clear that Wandsworth Council can accept no responsibility for their products or services advertised.



Burntwood School, Wandsworth



Cobalt Place, Battersea



SPECIALISTS IN PARTNERING WITH LOCAL BOROUGHS TO BUILD BETTER COMMUNITIES

St John Bosco School, Battersea



Cambium, Southfields



Our partnerships enhance our performance, spark innovation and sustain our communities to deliver lasting value. This has guided us to create successful partnerships based on trust and mutual understanding.

At Lendlease, we believe it's more than buildings that matter. It's the places we create, the spaces we make, the partnerships we build and the positive legacy we leave behind for everyone.

Proudly creating places to work, connect and enjoy.
[Lendlease.com](https://www.lendlease.com)



Contents



Foreword 9

Wandsworth 10

Our thriving town centres 12

The brighter borough 18

Nine Elms 20

Powering up 22

Building a thriving
business community 24

External business
support services 29

Meeting & events venues 32

Handy council
business contacts 36

Picking premises 37

See inside back cover for information on **Wandsworth it'slocal**



LUXURY LONDON LIVING WITH REDROW

Formed in 2010, Redrow London is at the heart of our nationwide development business. London is a strong capital market, with Redrow now focusing on the new demand for luxury homes in Zones 3-6.

0208 536 5120 | redrowlondon.com

 **REDROW**
A BETTER WAY TO LIVE

Foreword

Welcome to Wandsworth Council's Business Guide



Welcome to the latest edition of Wandsworth Council's Business Guide and Directory.

During my six years as council leader, Wandsworth has established itself as one of the most forward thinking boroughs in London when it comes to working with, supporting and nurturing local businesses.

We believe that our businesses are the lifeblood of the local economy and that ethos has led to Wandsworth being recognised as the 'Best All-Round Small Business Friendly Borough' in London.

This guide is important as it demonstrates why Wandsworth is such a great place to do business and all that we have to offer.

We have set up two Business Improvements Districts in Wandsworth - Positively Putney and Wandsworth Town - which have been incredibly successful in raising money to help fund important local investments.

Local businesses working together with Wandsworth Council to improve their area - it's a great partnership approach. We are now looking to extend this model to Clapham Junction and in time to Balham and Tooting.

Another factor for our success is the combination of a highly skilled workforce and Wandsworth's central location with excellent transport links.

We've seen these links strengthen further recently with the opening of a new pier at Battersea Power Station's Circus West Village. This now links us, through the River Bus service operated by MBNA Thames Clippers, to Embankment, Blackfriars and Canary Wharf via a network of piers along the Thames.

And this will be followed by the opening of the Northern line extension in 2020 which will add further connectivity to Battersea and London's newest neighbourhood - Nine Elms - where we are creating an exciting new destination.

We also are doing everything we can to make Wandsworth a great place to invest and this is borne out by the announcements that Apple will be moving to Nine Elms in the next few years and that the Royal College of Art is building its new south London student campus in Battersea.

These high profile digital and technology institutions coming to Wandsworth will open up real opportunities for our residents and have a definite knock-on effect in encouraging complementary companies to make a similar move.

This Brighter Borough's future is set to be brighter still.

I hope you enjoy reading this guide and learning about how Wandsworth can support your business and help drive it to success.

A handwritten signature in black ink that reads "Ravi Govindia". The signature is written in a cursive, slightly slanted style.

Cllr Ravi Govindia
Leader of Wandsworth Council



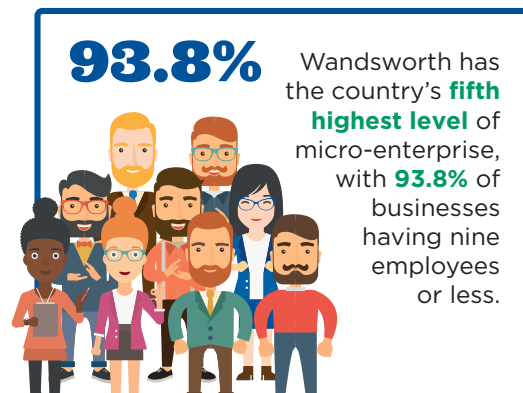
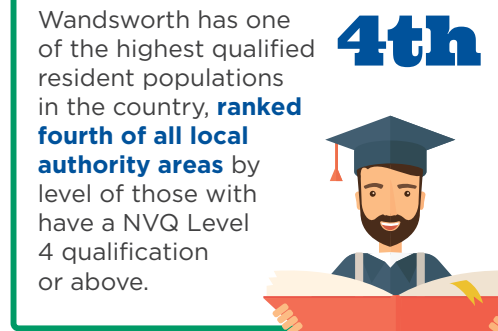
Wandsworth:

A vibrant small business economy with big ambitions

Wandsworth is one of the largest inner London boroughs, and is home to more than 320,000 residents and 18,000 businesses.

The borough is cited as one of the country's most entrepreneurial and dynamic small business economies.

Here's why:





Work continues at a pace on the Battersea Power Station and Nine Elms redevelopment areas – the biggest redevelopment project in London and one of the biggest in Europe. When complete, this will provide a brand-new destination in central London, providing: 6.5 million sq.ft. of new commercial space; 2.8 million sq.ft. of retail and leisure space; over 3 million sq.ft. of new office space; 20,000 new homes; approximately 25,000 jobs (post construction) and more than £1bn in new infrastructure.

The area will also see two major new town centres at Vauxhall and Battersea Power Station. Two-thirds of the new commercial space will be delivered by 2020.

Transport is essential to business success. Fortunately Wandsworth is extremely well-connected through public transport. “Europe’s busiest station” – Clapham

Junction – sits in the heart of Battersea, complementing District Line underground services in the west of the borough and London Overground trains cutting east to west. In total there are seven overground and five underground stations in the borough. The new Northern Line extension is currently under construction, and will create new stations at Battersea Power Station and Nine Elms, set to be operational by 2020. New bus routes are also being introduced to the area.

Two new passenger piers will connect Nine Elms on the South Bank to London Riverbus services and a new MBNA Thames Clippers pier at Battersea Power Station has recently opened. A new pedestrian and cycle bridge connecting Nine Elms on the South Bank with Pimlico embankment is also in its design phase. If these connections aren’t enough, the London Heliport – London’s only licensed heliport – is located in Battersea.

It's official! Wandsworth is the most business friendly borough

A supportive business environment is key to business success and Wandsworth is recognised as a leader in this field. In March 2017, the London Borough of Wandsworth beat five other shortlisted London Boroughs to take the coveted **“All Round Small Business Friendly Borough”** at the 4th Small Business Friendly Borough Awards.

This award commends councils for successfully implementing wide-ranging policies to support and develop the local micro and small business community. The council also scooped the award for **“Best Small Business Champion (Officer)”**.

► Find out more about what we do by visiting:
www.wandsworth.gov.uk/business



Our thriving town centres and business districts

Wandsworth's town centres and business districts are Balham, Clapham Junction, Putney, Tooting, and Wandsworth Town.

Each centre has its own unique flavour and form the borough's main hubs for shopping, entertainment and leisure activities. In April 2017, Putney and Wandsworth Town centres both became Business Improvement Districts (BIDs) after local firms voted through ambitious plans to boost trade and tackle key local issues.



BALHAM

Balham frequently wins plaudits for being one of the best places to live in Britain. It's a town that mixes Edwardian and Victorian charm with award-winning architectural design, and with its accessible location and young professional population, is a great place to do business and live.

On the high street you'll find Sainsbury's and Waitrose, alongside a number of national chains such as TK Maxx, Holland & Barrett, Caffé Nero and a new Travelodge (Balham's first major hotel brand). The area also boasts a vast array of independent boutiques, cafés and eateries, which give Balham a distinctive neighbourly feel.

Balham offers a vibrant evening economy, with a range of award-winning bars and restaurants.

There is also a retro cinema in the Exhibit restaurant and a charming strip of local independent shops and cafés on nearby Ritherdon Road. The Bedford, cited as "one of the most important and critically acclaimed venues in the country", holds the renowned annual Balham Comedy Festival as well as the Balham Literary Festival and Folk Music festival.



© Simon Kennedy

For food-lovers, there's the annual outdoor Balham Food Festival in September, Balham Farmers' Market and Hildreth Street Market. The town centre is well served by public transport, with the Northern Line tube, National Rail services into Victoria via Clapham Junction, five bus routes plus a night bus.

► balham.com

What one thing you recommend to a new business coming into the borough? *"Make a point of chatting with other businesses in the area you're planning to open and give the council a call, they seem keen to support small businesses."*



James Hickson, founder, We Brought Beer.

webroughtbeer.co.uk

CLAPHAM JUNCTION

Despite the name, Clapham Junction is actually located in the heart of Battersea. Renowned for its period architecture, the area is popular with young professionals due to the close proximity to Central London and its lively atmosphere and bustling nightlife.

Clapham Junction is often described as an “eclectic shopping destination”: St John’s Road, the main shopping street, features a number of national chains, whilst Battersea Rise and Northcote Road are known for their lively food and drink scene. Here, in addition to a huge variety of restaurants, bars and eateries, you’ll find boutiques such as Whistles, LK Bennett and Cath Kidston alongside independent businesses such as the Dessert Deli and the Hive Shop, a Dickensian styled shop entirely devoted to bees and honey.

The Northcote Road Market takes place every Friday and Saturday with traders selling everything from artisan breads, cheese, fruit and veg to flowers, clothes, furniture and crafts.



The road also features an indoor antiques market which houses 30 antique dealers under one roof. Clapham Junction is home to The Grand, a grade II-listed building which launched as a music hall in 1900, and Battersea Arts Centre, the former town hall. Today, both venues boast an eclectic programme that features some of London’s best live gigs and fringe productions. Clapham Junction is the busiest station in Europe by track activity, with more than 2,000 trains passing through each day.

► claphamjunction.co.uk



Wandsworth is a great place to do business because... “There is a fantastic community of people here who like to support local independent businesses.”

Laura Amos, founder, The Dessert Deli
www.dessertdeli.com



RISING FROM THE ASHES

Battersea Art Centre’s Grand Hall, severely damaged by fire in 2015, is due to reopen in 2018.

In an attempt to help address the need for affordable workspace within the borough, the Lower Hall will become a hub for a curated range of early-stage businesses. The hub will provide a bridge between subsidised arts and the creative industries, and will house a variety of early-stage businesses. Emerging entrepreneurs will receive two hours of business support each month.

For more information email jacquih@bac.org.uk or visit www.bac.org.uk

TOOTING

FULL OF FLAVOUR



the largest, fresh water open-air swimming pool in the United Kingdom, which opened to the public in 1906. Social enterprise is active here too, with initiatives such as Be Enriched, which hosts free weekly community meals. The charity partners with local retailers to use surplus food that would have otherwise gone to waste. It is estimated that almost 40,000 people pass through Tooting Broadway station every day.

► Tootinglife.com



What do you love most about being based in Tooting? *"The variety and choice from the specialist shops and the international cuisine of restaurants that help provide the area with a vibrant night life."*

Pravin Pattni, founder, of the award-winning Minar Jewellers
minar.com

TOOTING

Multi-cultural and eclectic, Tooting is one of the borough's busiest town centres. Often referred to as the "new Shoreditch", this is where artisan brunch spots meet authentic curry houses; where new cocktail bars stand alongside sari shops and high-street chains such as Primark and TK Maxx.

The town is fast becoming a foodie's paradise, boasting culinary delights such as Lahore Karahi Chutney, the Chicken Shop (owned by the entrepreneur behind Soho House) and the award-winning, antipodean-style cafe MUD. The annual "Tootopia" – a three-day festival celebrating Tooting's diverse food, drink and live entertainment scene - is described by Time Out as "one of London's top three annual foodie festivals".

Tooting is also home to St George's University Hospital and Medical School, South Thames College, two indoor markets – Broadway Market and Tooting Market, Tooting Common and the famous Lido,

HOME TO AN AWARD-WINNING MARKET



Established in 1930, Tooting Market is one of south London's premier indoor markets. In 2017 it was named "Best Small Indoor Market in the UK" by the National Association of British Market Authorities (NABMA), and in 2016 was crowned Business of the Year at the Wandsworth Business Awards. The market hosts a diverse food court and a variety of tenants selling everything from fresh produce and fabrics to crafts, art and vintage clothes and furniture. Recent additions to the market include: We Brought Beer; Franco Manca; the Brickwood Café; and Unwined.

► Tootingmarket.com



PUTNEY

Putney is a cosmopolitan and historic riverside town. It has a population of around 135,000, drawing both professionals and young families.

Since the second half of the 19th century, Putney has been one of the most significant centres for rowing in the UK, and is home to more than 20 rowing clubs based on the River Thames at Putney Embankment. Each year, more than 250,000 spectators gather here to watch the start of the annual Oxford and Cambridge Boat Race, which has had Putney as its starting point since 1845.



Putney's bustling commercial centre is anchored by the Exchange Shopping Centre, which is home to more than 40 shops, whilst the high street features a mix of national chains and independents stores.

The area offers some of the best transport links in South West London; it has a mainline station served by South West Trains, two underground stations (Putney Bridge and East Putney), 15 different bus routes plus a River Bus from Putney Pier to Blackfriars Millennium Pier.

In April 2017, Putney became a "Business Improvement District", which will help to grow the town's reputation as a welcoming and accessible place to shop, visit, work and do business, and is expected to bring in more than £1m investment over the next five years.

► positivelyputney.co.uk



WANDSWORTH TOWN

Wandsworth Town Centre has witnessed significant regeneration in recent years and has benefited from more than £1bn in private and public investment. The regeneration has brought extensive redevelopments to Hardwick's Way, Smugglers Way, Buckhold Road and South Thames College. It has also created new retail, leisure, residential and employment opportunities in the area.

Southside, London's fifth largest indoor shopping centre, now hosts some of the biggest retailers on the high street. The centre's 14-screen Cineworld and extensive range of restaurants is helping to foster a thriving evening economy for the area.

Wandsworth Town is home to an 80,000 sq ft Debenhams and the UK's largest "in town" Sainsbury's complex, which stands at 107,000 sq ft and features the 120-room Premier Inn and new Sports Direct retail outlet. By contrast, nearby



Old York Road has a distinct village feel with boutiques, independent shops and cafés at its heart. Transport for London has recently started a consultation process leading to the removal of through traffic from Wandsworth High Street to unite the town centre.

Work is currently underway on the £600m redevelopment of the old brewery site, "The Ram Quarter" by Greenland UK Investment Ltd, which will consist of more than 650 residential units, a new microbrewery, a brewing heritage centre and 9,500 sq m of space dedicated to new shops, bars



and restaurants. The development will preserve many of the site's historic buildings which will be restored and refurbished. It will also generate hundreds of permanent jobs. The River Wandle will be opened up and landscaped to provide public access along a new riverside walk.

Wandsworth Town is well served by three overground stations - Wandsworth Town station, Wandsworth Common and Earlsfield, Southfields underground station and several buses.

► wandsworth.town

WHAT'S A BID?

A Business Improvement District (BID) is a defined area within which businesses decide on priority actions and contribute funds to deliver them. BIDs have proved to be key in helping town centres evolve and thrive. Many BIDs are already in places across south west London, and others are emerging, with over 50 in London alone.

A five-year business plan to improve the town's performance is developed with businesses, who then vote on whether to take the plan forwards. If a majority of businesses vote "yes", all businesses above a set threshold pay a levy to fund the activities, usually around 1-2% of their premises' rateable value (that's £5-£10 per week for the majority of businesses). The BID is managed by a company formed from and led by levy-paying businesses.



Over the past 20 years Royalton are proud to have built some of the finest and most expensive properties to have been sold in England. We pride ourselves that each of our developments has a unique design and character but also incorporates exceptional detail and quality.



www.royalton.co.uk

The Brighter Borough:

18 A great place to live, work and play



Wandsworth has a wealth of attractions, making it a popular place to visit as well as a great place to live, work and play.

Whatever your passions or interests, whether they are art, theatre, sport, outdoor pursuits or family activities, the borough offers an abundance of choice.

SPORTS AND LEISURE

The borough is home to a number of great parks and sporting facilities. There are 670 hectares of green space to enjoy in Wandsworth. Tooting Common (221 acres) is the largest open space in the borough and features an activity centre, athletics track, in-season fishing lake and a Grade II-listed lido, the UK's largest, freshwater outdoor pool.

Other parks include Wandsworth Common, King George's Park, Battersea Park and

Wandsworth Park. In 2017, Battersea Park, a 200-acre green space, was confirmed again as one of the best green open spaces in the country after successfully retaining its coveted Green Flag award. Described as "the jewel in the crown of London's parks", the award from leading environmental charity Keep Britain Tidy recognises the best parks and green spaces across the UK. Facilities at Battersea Park include a boating lake, the Millennium sports arena, a lakeside café, mini-golf, a children's zoo and a picturesque Peace Pagoda.

Get Active Wandsworth Festival, which takes place in King George's Park each year, showcases the very best the borough has to offer in sport, physical

activity and health and attracts around 10,000 visitors.

In April, around 250,000 spectators gather in Putney to watch the start of one of the oldest sporting events in the world, the annual Oxford and Cambridge University Boat Race.

Wandsworth has over 490 listed buildings. They include: Battersea Power Station; the Royal Patriotic Building; and the Pump House Gallery. The Grade I listed Gala Bingo Hall in Tooting, formerly the Granada Concert Hall where the likes of Frank Sinatra once performed, is one of the borough's lesser known gems.

ARTS & CULTURE

Some of the country's most prestigious cultural institutions are located in Wandsworth. These include; the National Opera Studio, the Royal College of Art, the Pumphouse Gallery, StudioRCA – run by the RCA as a test-bed and exhibition space – and The Tooting Arts Club. The borough's thriving theatre scene includes: Battersea Arts Centre; Putney Theatre; Tara Arts and Theatre 503, whilst the annual Wandsworth Arts



Fringe (WAF) in May brings together more than 140 events, performances and productions in an array of indoor and outside venues across Wandsworth. Annual street events such as Old York Road Unplugged and the St John's Hill festival feature live music and free family entertainment as well as an opportunity for independent traders to showcase their wares.

The BAC Moving Museum cares for the Wandsworth Collection of historical objects and the stories they represent, tracing the history of the borough and the surrounding areas.

With its iconic landmarks, varied architecture and stunning open spaces, the borough has long been a favourite filming location for film directors and production companies shooting Blockbuster movies, TV adverts and shows. Wandsworth has featured in films such as *A Clockwork Orange*, *Alfie* (1996), *Love Actually*, *Dark Knight Rising* and *The Fast and the Furious*. You must have a licence for commercial filming and photography on council property in Wandsworth.

THE FOOD LOVER'S BOROUGH

There is an abundance of award-winning restaurants and eateries in Wandsworth, and the borough is fast becoming a food lover's haven. Locals can choose from a wealth of fine-dining restaurants such as the Michelin-starred Chez Bruce (Wandsworth Common), Gordon Ramsay's London House (Battersea) or Lambert's (Balham). In 2017, newcomers Goose Island, an iconic Chicago brewery, which recently opened its first UK venue in Balham and Plot, a plate sharing eatery in Broadway Market, both featured in Time Out's "Best New Restaurant in London" list. Thanks to its



diverse global cuisine offering, Tooting is regularly cited in the national press as being the capital's latest food destination.

Annual food events in the borough include Tootopia, a three-day festival celebrating Tooting's diverse food, drink and live entertainment scene and Foodstock LDN, a music and food festival held in Battersea Park in July.

▶ tootopia.co.uk
foodstock.london

Nine Elms:

20

London's Greatest Transformation



Nine Elms has always been a critical part of London's landscape. Its past is one of commerce and industry, its future is of enterprise, art, culture and living.

The vision is a long-term one; to transform one of the capital's last remaining industrial districts into an amazing place for Londoners old and new to call home, whether to live or work. Today's reality is an exciting one; new spaces and places coming to life every day.

The area's transformation is progressing at speed, with some big changes already apparent. 2017 was a year characterised by new arrivals. New residents at Battersea Power Station, for example, but also the opening of the new US Embassy, and the new Flower Market at New Covent Garden Market: the first major milestone in New Covent Garden

Market's five-year transformation into a major new Food Quarter and food business hub for London. A London icon, the Market is home to some of the UK's elite fresh food suppliers and supplies all of the top 20 London restaurants. Alongside new facilities for the wholesale market, new office and retail space is being delivered across the site, as well as the Food Exchange: four storeys of flexible modern offices, workspaces, specialist food retailers and food and flower education.

Other changes are just as significant, if not as visually apparent. Tunnelling work to extend the Northern Line Extension to Battersea has been completed, creating

two new tube stations at Nine Elms and Battersea Power Station that will be operational by 2020.

A good number of new businesses have started moving into the area – many as part of Battersea Power Station's first phase, Circus West Village. Existing Wandsworth businesses Ben's Canteen and Vagabond Wines are joined by other London names like Pedler, Wright Brothers and Paul Edmonds hair & beauty as well as Copenhagen pizza restaurant Mother.

In total, a whopping 6.5 million sq. ft. of new commercial space is being delivered across the area, with two-thirds by 2020, to coincide with the opening of the Northern Line extension. Over 3 million sq. ft. of new office space is being created: Apple is one of the big names already confirmed, moving its UK headquarters to Battersea Power Station in 2021; a clear signal that the area is a serious commercial quarter for central London.

There is a good variety of workspace on offer, from brand new, grade A office space to refurbished railway arches,

workshops, hybrid units, serviced offices and desk space. Some 1,000 businesses are already well established locally, representing a range of sector specialisms. New occupiers will benefit from a strong network of business services including IT, telecoms, digital and creative agencies; a network that's very much still growing.

The area is becoming a vibrant 24-hour creative district, where culture integrates with business and commerce. A gallery quarter has emerged around Vauxhall and Nine Elms, and Wandsworth Council is taking a proactive approach in attracting creative industries to take root across the area. The Royal College of Art's StudioRCA is already well established at Riverlight, and Matt's Gallery is setting up at The Residence in 2019/20.

An extensive network of green open spaces will make this an attractive place for all, with pedestrian and cycle friendly routes linking Battersea Park through to Lambeth Bridge. A new 12-acre Nine Elms Park will play a vital role, connecting the area's two town centres, Battersea Power Station and a revitalised Vauxhall,



via the new commercial hub at Embassy Gardens. 3km of River Thames frontage is being opened up for the first time in decades, with new sections of the Thames River Path opening in phases, including pocket parks along Nine Elms Lane at Riverlight and Riverside Gardens, and one acre of open space by Battersea Power Station.

Nine Elms is fast becoming a thriving riverside community and commercial district, and one which we'd like your business to call home.

- ▶ Follow our progress on Twitter [@NineElmsTeam](https://twitter.com/NineElmsTeam) or find out more on our website, www.nineelmslondon.com.



Powering up



The once crumbling Battersea Power Station is being transformed into a 42-acre miniature town. As residents move in and shops, bars and restaurants spring up, London's best-loved landmark is now open for business.

The road to restoration of Battersea Power Station has been a long one. For many years, the only residents of the site were the peregrine falcons which moved in at the turn of the century. However, in 2012 the Malaysian shareholders – Sime Darby, S P Setia and the Employees Provident Fund – acquired the site. Since then, real progress has been made.

The first phase, Circus West (set to open in summer 2017) is now approaching completion and handovers of apartments have begun. The non-residential part, Circus West Village, is taking shape in

the lower levels of the new buildings and adjacent railway arches. Part of the forthcoming riverside park is now open to the public via Grosvenor Arch which will soon be an array of independent new shops, gyms, cafés, restaurants and bars, including: Copenhagen pizzeria Mother; seafood restaurant Wright Brothers; gin distillery Dodd's Gin; Earlsfield diner Ben's Canteen; Duckroad, a sister restaurant to Soho's Ducksoup and Rawduck in London Fields; and high-energy, music-focused fitness brand Boom Cycle, which offers motivational spinning workouts.

“We’re beyond excited to be part of one of London’s most iconic locations,” say Boom founders Hilary and Robert Rowland (pictured below left). “The vision that has been set out by the team at Battersea Power Station will ensure an incredible place to work, live, visit and socialise.”

Ben Wright and Robin Hancock, co-owners of Wright Brothers (pictured below far right), are also delighted with the new premises:

“We’re thrilled to be opening a new restaurant right next to the iconic Grade II-listed Battersea Power Station. We’re very proud that our wholesale business now supplies over 250 top restaurants with seafood, and to open our fifth restaurant south of the river.”

The new Village Hall will host both large and small events. Residents and visitors at Circus West will also have a ringside seat for the restoration of Battersea Power Station itself, due to be complete in 2020.

In 2016, technology giant Apple confirmed that the iconic power station will house its new London campus in 2021. The firm will become the largest office tenant at the former electricity generator, with 1,400 staff across six floors in the central boiler house.

The successful regeneration of Battersea Power Station will create 20,000 new jobs, inject £20bn into the UK economy and help to fund the Northern Line extension, the first new Underground line since the Millennium.

► For more information on The Village Hall, please contact the events team at events@bpsdc.co.uk
www.batterseapowerstation.co.uk



Building a thriving

24

business community



Wandsworth is a small-business friendly borough.

Businesses in Wandsworth contribute to the vibrancy of our town centres as great places to live, work or visit.

The council has a long-standing policy of supporting its business community, recognising its valuable role in generating wealth, creating local employment and creating Wandsworth's sense of place – reflected especially in its town centres.

The Economic Development Office (EDO) leads the council's objective of building a prosperous, vibrant and cohesive business community; as well as helping Wandsworth be a good place to do business and ensuring residents have access to skills and employment.

The EDO works in partnership with a range of businesses and business support organisations, such as the Town Centre Partnerships, Wandsworth Chamber and the Nine Elms Vauxhall Partnership to maintain a healthy and vibrant local enterprise.

Some of our recent initiatives include:

Work Match – an employment brokerage which matches quality candidates to local jobs, apprenticeships and training opportunities.

Wandsworth Enterprise Week –

an annual event which features free business support events, advice and networking opportunities. Enterprise Week attracts thousands of attendees each year, and is a key highlight of the borough's business calendar.

Your Business Your Growth –

a support programme which comprises free business support for businesses in the food and tech sector, a Coding Club for young students, and Supply Nine Elms, which provides local businesses with support and access to contracts arising from the Nine Elms developments. The Supply Nine Elms programme has generated new contracts worth a total of £1.2m for local firms.

The EDO supports a wide range of community events which take place annually across our town centres. It also promotes and localises national campaigns such as Small Business Saturday and Shop Local.

Work Match: Supporting all your recruitment needs

The council supports the enterprise economy of Wandsworth and provides services designed to support and help residents get into work.

Work Match is a free, specialist, employment-brokerage service set up by the council in 2014, to help match local residents with employers within the borough. It provides a range of services to help support job-seekers to access

training and make the most of job opportunities resulting from the major regeneration and inward investment taking place across the borough.

This includes the opportunity to work in and supply to the Nine Elms Regeneration area and its burgeoning tech quarter, which includes Apple's new UK headquarters at Battersea Power Station.

Since launching in 2014, Work Match has forged links with hundreds of local employers and training providers, and placed more than 700 Wandsworth residents into jobs.

Their dedicated team of Business Engagement Officers work closely with local businesses to get a clear understanding of the company, along with the skills and the experience they require from candidates. They then match job opportunities with high calibre candidates.

Job seekers who register to be "matched up" with suitable roles receive tailored pre-employment training such as; CV development, interview coaching, assistance with applications, as well as ongoing support once they find work.

The Work Match construction team works with major developers in Nine Elms and Wandsworth to identify future vacancies at all levels that can be opened to local people.

Work Match offers a wealth of experience and knowledge related to a huge range of sectors, as well as an expert and professional understanding of the qualities, skills and experience required of candidates.



"With help and commitment from Work Match, we successfully recruited a receptionist/care navigator. We'd go back to them without question for our future vacancies. They were extremely professional, personable, employer-led and invaluable to us in helping to fill our vacancy with the right person."

Natalie MM Whyte FIHM
Managing Partner, Balham Park Surgery

► To find out how Work Match can help with your recruitment needs contact:

020 8871 5191

wandsworthworkmatch@
wandsworth.gov.uk

www.wandsworthworkmatch.org



SUPPORTING OUR ENTREPRENEURS OF THE FUTURE

Wandsworth Lifelong Learning offers various routes to training and employment for young people in the borough. These include apprenticeships, employability projects, work experience and internships. The Lifelong Learning team works closely with employers and employees to establish their needs and designs programmes that will have the desired impact.

APPRENTICESHIPS

The Apprenticeship Levy, which launched in April 2017, is a great opportunity for employers to access funding that can be used to train new and existing staff members, up-skilling them with abilities and knowledge that can have a positive impact on efficiency and morale.

The Apprenticeship Levy, which affects all employers operating in the UK that have a wage bill of over £3m, supports succession planning in the workplace.



How can employers benefit from the levy?

Funding that employers receive can be used to support all age groups within an organisation to develop skills and experience. Employers who recruit a 16-18 year old apprentice will receive an additional £1,000 of funding.

How much will I have to pay?

If you have a wage bill of over £3m the cost will be 0.5% of the wage bill. This will be collected through PAYE.

Do employers receive any allowances?

Yes, employers that have a wage bill over £3m will receive an allowance of £15,000

per year for training and development. The government will apply a monthly 10% top-up to funds to levy-paying employers that have an Apprenticeship Service Account.

What is available for employers with a wage bill under £3 million?

Those employers that have a wage bill less than £3m will not need to pay the levy until at least 2018. From May 2017, if you would like your team members to undertake an apprenticeship, you will need to contribute 10% to the overall cost of the programme with the government paying the remaining 90%.

How will my business benefit from having an apprentice?

Employers are able to develop future managers from within their organisation by having better trained, motivated and more disciplined staff who stay with you for longer. Apprenticeships cover a range of technical/vocational skills, helping your business to remain ahead of competition.

► For further information on the levy or sourcing apprentices contact:

Anjela Entwisle:
020 8871 5473/ 07554 330490
AEntwisle@wandsworth.gov.uk



"I've been impressed with how the apprenticeship programme works. The recruitment process and aftercare offered by the council's apprenticeship service is highly effective."

Karen Rieveley, Partner, Hodders Law

TRAINEESHIPS, WORK EXPERIENCE AND INTERNSHIPS FOR YOUNG PEOPLE

Traineeships help young people become "work-ready" and prepare them for an apprenticeship and a job. BEST is the Education Business Partnership for Wandsworth working closely with school and college students and businesses that can offer a young person a four to nine-week work placement. BEST brokers relationships with businesses to support employability skills and runs a large work experience programme.

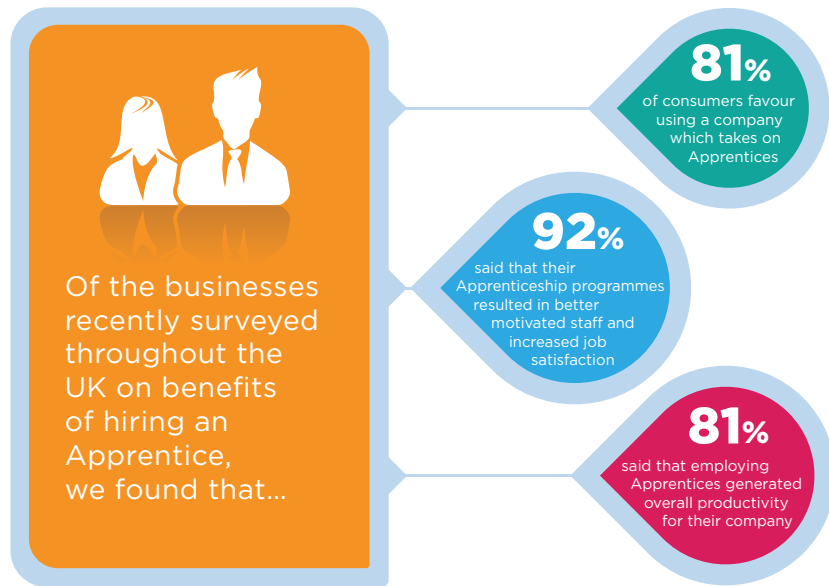
► To find out more contact:
Jackie Brown -Traineeships
020 8871 8957
jbrown2@wandsworth.gov.uk

Tuula Ball - work experience and internships
020 8871 8631
tball@wandsworth.gov.uk

THE YOUNG ENTERPRISE COMPANIES PROGRAMME

The Young Enterprise Company Programme has been running in Wandsworth for more than ten years, and there are currently seven schools across the borough involved.

The initiative challenges students aged 15-19 to run their own real business for an academic year, producing and marketing a product or service to sell to



the public. The students are given shares to sell; an HSBC Business Bank Account; and access to a number of online resources. In the spring the companies can participate in the YE Company of the Year Awards, starting at a borough level and culminating in the UK Final in July.

Students are supported by a local volunteer Business Adviser, who attends meetings at the school every fortnight to

guide the students on their journey. Advisers do not have to be business owners (although this of course can help) – what matters is commitment to the programme and an enthusiasm for supporting the next generation of entrepreneur.

► If you would like to get involved with the programme in Wandsworth, contact Michael Anderson
michael.anderson@y-e.org.uk

"Young Enterprise couldn't exist without the vital support from our local business volunteers."

Madeleine McCue Hodge, Young Enterprise



WANDSWORTH CHAMBER OF COMMERCE: SEVEN REASONS TO SIGN UP

The Wandsworth Chamber of Commerce is a friendly, thriving and influential business group. Whether you're part of a growing enterprise or run a start-up from home, here's why you should be part of it.

Meet new contacts: With more than 60 annual events, ranging from the Big Breakfast to business advice surgeries, there are plenty of opportunities for you to meet key stakeholders, connect with thousands of like-minded business people, and get tips on developing and growing your company.

Support for local businesses: With initiatives such as the Wandsworth Loyalty Card, the Chamber has created an internal market where all businesses aim to keep the pound in the borough by supporting a "buy local, live local,

trade local" agenda. **Get added exposure:** Your company's details will appear on the City Local Wandsworth Directory and on the Chamber website, putting your business in front of residents and hundreds of local firms.

Boost your credibility: You can use the "Trusted Chamber Member" logo on your website and in marketing messages, giving you that extra stamp of authority.

Promote your business: With free editorials and advertising, you can use Chamber's news channels to promote your business.

Have your say: The Chamber has an influential voice in the local decision-making process and enjoys a close working relationship with Wandsworth Council. If you want to report matters of concern, receive up-to-date information about developments in the borough and have a say on local matters, here's your chance.

Be recognised: Launched in 2013, the annual Wandsworth Business Awards is an exciting, enjoyable and important annual event in the business community calendar, highlighting some of the most vibrant companies in the borough.

"Small businesses are at the heart of our communities and play a central role in the government's strategy to create jobs and reinvigorate the economy. The Wandsworth Chamber network is an effective way of sharing ideas and knowledge, and boosting businesses in the borough."

Jane Ellison, president of the Wandsworth Chamber of Commerce

► wandsworthchamber.org



External business support services

29

providing advice and finance to local SMEs

Help to finance
your Start-up.
Turn your passion or
hobby into a business
with the help of a
Start-up Loan

Virgin StartUp provides Start Up Loans of £500-£25,000 as a delivery partner of the government-backed Start Up Loans scheme. Since inception, Virgin StartUp has provided over 50 loans to local Wandsworth entrepreneurs, worth £1.1m.

Loans are available to anyone over the age of 18 who wants to start a new business, or grow a business that has been trading for less than two years. Loan recipients must also be a citizen of the EU, or have a valid UK visa. The interest rate on the loan is fixed at 6% nominal, with typical repayment periods of between 12 and 60 months.

Loans are supported with free workshops, 1-1 business advice and mentoring.

► To find out more, visit
virginstartup.org/wandsworth-start-up-loans



BUSINESS LAUNCHPAD

Transforming young lives through enterprise. Business Launchpad provides free business counselling and workshops to young entrepreneurs aged 16-30 across London.

☎ 020 8516 7700
www.businesslaunchpad.org.uk

***BIG ISSUE INVEST**

The social investment arm of The Big Issue, which backs sustainable social enterprises, charities and ventures.

www.bigissueinvest.com

BRIGHT IDEAS TRUST

Provides funding and mentoring to help young, disadvantaged people aged 16-30 start their own businesses.

☎ 020 7021 0180
www.brightideastrust.com

***BETTER BUSINESS FINANCE**

A search engine that provides UK businesses with free, quick and easy access to a directory of finance providers, including: Business Angels; Regional Funds and Government Schemes; and Banks across Britain.

www.gov.uk/better-business-finance

BUSINESS IS GREAT

Support, advice and inspiration for growing your business

☎ 0300 456 3565
www.greatbusiness.gov.uk

CAPITAL ALLOWANCES

Information on capital allowances that could provide possible tax relief for capital expenditure within your business.

www.gov.uk/capital-allowances

*** FINANCE PROVIDERS*****ENTERPRISE FOR LONDON**

A business support organisation for start-ups and established entrepreneurs, which provides free one-to-one advice, training, access to finance and ongoing support.

☎ 020 7101 0696
www.enterpriseforlondon.com

ENTERPRISE NATION

Aims to create an inspirational environment for business owners and would-be entrepreneurs. The membership organisation offers networking events, start-up classes, workshops and face-to-face expert advice.

☎ 01743 272555
www.enterprisenation.com

***FREDRICKS**

Fredericks is a responsible finance provider that provides loans to people who want to set up a new business/ maintain or expand an existing business. Open to anyone who has a viable business proposition, but cannot obtain mainstream finance.

☎ 01276 472 722
www.fredericksfoundation.org

HMRC

HMRC runs free webinars on setting up your tax return correctly before you start, as well as getting your tax papers in order when taking on an employee for the first time.

www.gov.uk/browse/business

INSTITUTE OF CHARTERED ACCOUNTANTS ENGLAND AND WALES (ICAEW) BUSINESS ADVICE SERVICE (BAS)

The ICAEW Business Advice Service is an easy way to access specialist guidance and reassurance from a local

ICAEW firm on how to plan, start, manage or grow your business.

There is no charge for the first session – just practical thinking to help your business succeed.

☎ 020 7920 3561
www.icaew.com and
www.businessadvice.service.com

INTELLECTUAL PROPERTY OFFICE

The official government body responsible for intellectual property (IP), it provides advice on rights, including patents, designs, trademarks and copyright.

www.ipo.gov.uk

MENTORS ME

Britain's first online gateway for businesses looking for mentoring help.

www.mentorsme.co.uk

***NATWEST**

NatWest's support for entrepreneurs goes beyond just finance. They can connect you with the right people, with the right knowledge, to boost your business and help it grow.

Take your business to the next level with their Business Growth Enablers. Contact Bob Widdrington, Business Growth Enabler on

☎ 07901 110960
www.business.natwest.com

THE NATIONWIDE CATERERS ASSOCIATION (NCASS)

The UK's leading association for independent catering businesses, mobile caterers and street food traders.

☎ 0121 603 2524
www.ncass.org.uk

NEW ENTERPRISE ALLOWANCE

The New Enterprise Allowance can provide money and support to help you start or grow your own business if you're getting certain benefits.

www.gov.uk/new-enterprise-allowance

PRS

Do you play music in your place of work? If you have "copyrighted" music in your shop, then you need a PRS licence to ensure you are legally compliant.

www.prsformusic.com

*THE PRINCE'S TRUST

A charity that helps change the lives of 13-30 year olds. The Trust's programmes give vulnerable young people the practical and financial support needed to stabilise their lives, helping develop self-esteem and skills for work.

☎ 0800 842 842

www.princes-trust.org.uk

*SEEDRS

An equity crowdfunding platform supporting early stage, start-up and growth-focused businesses to raise investment of up to £5m.

support@seedrs.com

www.seedrs.com

SOCIAL ENTERPRISE UK

For those considering setting up a social enterprise, the national body Social Enterprise UK is a key source of advice.

☎ 020 3589 4950

www.socialenterprise.org.uk

THE GOOGLE DIGITAL GARAGE

UpSkill Digital is a free digital skills training agency and consultancy that creates training packages to help

improve the online performance of your business to help you stay ahead of the competition. Courses include: building a website, improving your visibility on Google, understanding Google Analytics and Social Media for Business.

☎ 07999 234 007

team@upskilldigital.com

www.upskilldigital.com

UK GOVERNMENT WEBSITE

The UK Government website has a considerable range of business start-up guidance, support and advice for established businesses:

www.gov.uk

*VIRGIN STARTUP

Virgin StartUp is a not-for-profit company founded by Sir Richard Branson that gives start-up loan funding to early stage entrepreneurs based in England. Entrepreneurs who receive funding from Virgin StartUp are matched with their very own mentor. Virgin StartUp is a delivery partner of the government's Start Up Loan scheme.

www.virginstartup.org

hello@virginstartup.org

WANDSWORTH CHAMBER OF COMMERCE

Wandsworth Chamber of Commerce is a membership organisation of local business people set up to further the interests of business and trade within the borough of Wandsworth.

The Chamber offers business advice and organises regular networking and business support events, to which non-members are welcome.

www.wandsworthchamber.org

* FINANCE PROVIDERS

Meeting & events venues

Holding a business event, meeting or conference? Whether you're planning a launch party, a company presentation or a major conference in Wandsworth, choose from traditional, historical or unique venues to state-of-the-art meeting rooms.

12 ROUNDS BOXING GYM

1A St John's Hill,
Clapham, SW11 5EW

Not your average corporate venue, the main gym (has boxing ring that can be removed) features a projector screen and private bar, suitable for private functions, corporate launches and events for up to 200. The studio space is available for meetings, workshops and photo-shoots that can accommodate up to 30.

www.12roundsboxing.co.uk

BALHAM BOWLS CLUB

7-9 Ramsden Road,
Balham, SW12 8QX

A quirky public house/restaurant set in an old bowling club. Its Ballroom, which has a dance floor and stage, can accommodate up to 120 standing.

☎ 020 8673 4700
www.balhambowlsclub.com

BANK OF ENGLAND SPORTS CLUB

Bank of England Sports Centre,
Bank Lane, off Priory Lane,
Roehampton, SW15 5JQ

Purchased by the Bank of England in the early 1900s, the site combines the benefits of a traditional club with the needs of today and offers spaces for boardroom-style meetings for 12 and a conference for 300.

☎ 020 8392 4372
www.bankofenglandsportscentre.co.uk

BATTERSEA ARTS CENTRE

Lavender Hill, London, SW11 5TN

Battersea Arts Centre has a number of rooms and spaces and can host all manner of events accommodating anything between 2 and 200 guests.

☎ 020 7326 8211
www.bac.org.uk

BATTERSEA BARGE

A former 1930s converted Dutch grain barge, this unique floating venue can be hired for a range of events including weddings, meetings and parties. The capacity for the whole boat is 150, but it is also available for exclusive hire for groups of over 40 people.

☎ 020 7498 0004
www.batterseabarge.com

BATTERSEA EVOLUTION

Battersea Evolution, Battersea Park
(Chelsea Bridge Entrance), SW11 4NJ

Situated in an exclusive site in the picturesque Battersea Park, Battersea Evolution is a flexible, purpose-built event space for up to 4,000.

☎ 020 7836 1035
www.batterseaevolution.co.uk

BATTERSEA PARK – CONFERENCE ROOM

Located in the park's Herb Garden, the Conference Room can host a range of events including meetings, training classes, seminars and classes.

Accommodates up to 40 people.
☎ 020 8871 7534

BATTERSEA PARK - THE GREEN

A vintage pavilion adjacent to a private green for hire. The pavilion has a small prep kitchen and indoor room to seat up to 30 people. The green is perfect for a marquee, summer party or BBQ.

☎ 020 8871 7534

CHATHAM HALL

152 Northcote Road,
SW11 6RD

Used for a variety of functions it is ideal for smaller events and activities. It can seat up to 100 people.

☎ 020 8871 6394

www.enablelc.org/chatham-hall

CROWN PLAZA LONDON - BATTERSEA

Bridges Wharf,
Battersea, SW11 3BE

Located on the Thames next to the London Heliport, the hotel offers conference and meeting spaces, with a full range of conference equipment for hire.

☎ 020 7801 3500

www.crownplaza.com/battersea

(pictured below, left)



ELM GROVE

Elm Grove Conference Centre,
Roehampton Lane, SW15 5PH

Elm Grove is a state-of-the-art centre. It features a conference suite that can accommodate up to 140 seated and a further suite which can seat up to 100, both can be flexible arranged. It also has an exhibition space and two meeting rooms that seat 10 (boardroom style). Overnight accommodation is also available.

☎ 020 8392 3505

www.roehamptonvenues.co.uk

GROVE HOUSE

Roehampton Lane, SW15 5PJ

This Grade II listed Georgian villa has retained many original features and offers three rooms for hire.

The Portrait Room -
200 standing/150 seated,
The Terrace Room -
150/up to 60 seated, and the
Adam Room -
80 standing/up to 60 seated.

☎ 020 8392 3505

www.roehamptonvenues.co.uk

HOLIDAY INN EXPRESS

Riverside West,
Smugglers Way,
Wandsworth, SW18 1EG

The hotel has a meeting room that can be arranged in a number of layouts for up to 25 people.

☎ 087 1902 1546

www.holidayinn.com

LE GOTHIQUE

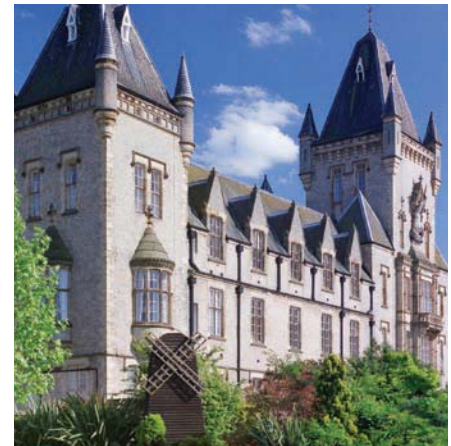
Royal Victoria Patriotic Building,
John Archer Way,
Wandsworth
Common, SW18 3SX

Located in the beautiful and historic Royal Victoria Patriotic Building, this listed venue can accommodate corporate events such as conferences and product launches, either under a marquee in the walled garden or the restaurant. Accommodates 100 seated/ 150 standing.

☎ 020 8870 6567

www.legothique.co.uk

(pictured below, right)



LITTLE TAPERIA

143 Tooting High Street,
SW17 0SY

This award-winning authentic Spanish restaurant has three separate, flexible areas which each can accommodate 20-40 people. The entire restaurant can also be hired and can accommodate 80 seated/100 standing.

☎ 020 8682 3303
www.thelittletaperia.co.uk

OPEN DOOR COMMUNITY CENTRE

Keevil Drive, Beaumont Road,
Southfields, SW19 6TF

The main hall can be hired for large events, up to 200 seated, and there are a series of smaller rooms which can accommodate a range of uses, such as meetings for up to 60, exercise classes or rehearsals.

☎ 020 8871 8174
www.enablelc.org/open-door

PARKSTEAD HOUSE

Holyborne Avenue,
Roehampton, SW15 4JD

An iconic 18th century villa set against the back drop of Richmond Park, Parkstead House offers a unique mixture of traditional meeting rooms which can be arranged in a number of styles and two lecture theatres, one seating 300 and the other 150.

☎ 020 8392 3505
www.roehamptonvenues.co.uk

PESTANA HOTEL

354 Queenstown Road, SW8 4AE

Located directly opposite Battersea Park and Battersea Power Station, this hotel has meeting and conference rooms accommodating 12 to 500 people.

☎ 020 7062 8000
www.pestana.com/uk

RESERVE FORCES AND CADETS ASSOCIATION - BALHAM

Fusilier House,
213 Balham High Road,
SW17 7BQ

Only a few minutes walk from the underground and train stations, the Drill Hall can accommodate a number of different events, including a reception or dinner for 200. The Officers' Mess can seat up to 20 for a meeting or dinner. There are also classrooms for up to 20.

☎ 020 7384 4670
www.alternativevenues.co.uk/venues/balham

RESERVE FORCES AND CADETS ASSOCIATION - BATTERSEA

27 St John's Hill,
Clapham Junction, SW11 1TT

Located very close to Clapham Junction Station, the Drill Hall can accommodate 120 in theatre style and 100 seated. The Officers' Mess can seat 20 for a meeting or dinner. There are also classrooms for up to 25.

☎ 020 7384 4670
www.alternativevenues.co.uk/venues/battersea

RESERVE FORCES AND CADETS ASSOCIATION - SOUTHFIELDS

351 Merton Road,
Southfields, SW18 5JX

Within walking distance from the underground station, the Hall can accommodate 100 in theatre style or for a dinner and 125 for a reception. There are also a number of classrooms of varying sizes, accommodating up to 25.

☎ 020 7384 4670
www.alternativevenues.co.uk/venues/southfields

ROYAL COLLEGE OF ART

Dyson Building, 1 Hester Road, SW11 4AN

This leading art and design university has a Battersea campus where you can hire the Lydia and Manfred Goryv Lecture Theatre, which is two-tiered and can seat up to 220.

☎ 020 7590 4118
www.rca.ac.uk

TARA THEATRE

356 Garratt Lane, Earlsfield, SW18 4ES

This fully accessible theatre offers hire of a 100 seat theatre, 30 seat studio and bar with private outdoor patio garden space for up to 70.

☎ 020 8333 4457
www.tara-arts.com

THE ALMA

499 Old York Road,
Wandsworth, SW18 1TF

The Bramford Room can be hired in a variety of configurations that can accommodate up to 80 standing/50 seated.

☎ 020 8870 2537
www.almawandsworth.com

THE ANTELOPE

76 Mitcham Road, Tooting, SW17 9NG

This pub based in Tooting Broadway has rooms available for hire which can accommodate a number of different events types.

☎ 020 8672 3888
www.theantelopepub.com

THE BEDFORD

77 Bedford Hill, Balham,
London, SW12 9HD

This converted Victorian hotel and well-known music/comedy venue has a number of rooms for hire, for up to 300 people.

☎ 020 8682 8940
www.thebedford.com

THE DEVAS CLUB

2a Stormont Road,
Battersea, SW11 5EN

This purpose-built youth centre has a number of spaces to hire, including a training kitchen, hall, computer suite, studios, gym, sports area and dance studio between 9am and 5pm.

☎ 020 7223 0297
www.devasclub.org

THE EXHIBIT

12 Balham Station Road,
Balham, SW12 9SG

This hub has a selection of private and semi-private spaces to hire, including a cinema screen seating 28.

☎ 020 8772 6556
www.theexhibit.co.uk

THE LODGE HOTEL

52-54 Upper Richmond Road,
Putney, SW15 2RN

This hotel has a suite, called the KH, equipped with modern conference equipment that can be arranged in a variety of layouts, accommodating 120 in a theatre style. The library can accommodate 20 seating/35 standing. The Ramsey Suite is a private boardroom and can be used as a cinema for up to 12.

☎ 020 8874 1598
www.thelodgehotellondon.com

THE PUMP HOUSE GALLERY

Battersea Park, SW11 4NJ

This historic Grade II listed Victorian building with beautiful views over the lake lawns can be hired for private functions. It can accommodate 70 inside/up to 150 on the Piazza.

☎ 020 8871 7572
www.pumphousegallery.org.uk

(pictured right)

THE THAMES ROWING CLUB

Thames Rowing Club,
Putney Embankment, SW15 1LB

The clubhouse, opened in 1879, offers spaces to hire for private events. The Great Hall can accommodate 350 standing/150 dining; the Fairbairn Room seats 20-30 and the bar can accommodate 150.

☎ 020 8788 0798
www.thamesrc.co.uk

TRIDENT BUSINESS CENTRE

89 Bickersteth Road,
Tooting, SW17 9SH

Meeting rooms for up to 30 people.

☎ 020 8516 7700
www.tridentcentre.co.uk

WANDSWORTH CIVIC SUITE

Wandsworth High Street, SW18 2PU

A Grade II-listed suite in Wandsworth Town Hall consisting of two interconnecting function rooms both of which can be adapted to accommodate a range of events and celebrations, which can seat up to 700 people. A fully equipped kitchen is also available to use.

☎ 020 8871 6394/6395
www.enablelc.org/civic-suite



WHITE EAGLE CLUB

211 Balham High Road,
SW17 7BQ

This Polish Club offers a function room that can accommodate up to 300 people and the conference room up to 40.

☎ 020 8672 1723
kluborlabialego.co.uk

WILDITCH COMMUNITY CENTRE

48 Culvert Road,
Battersea, SW11 5BB

The main hall can be hired for large events and there are a series of smaller rooms which can accommodate a range of uses, such as meetings, exercise classes or rehearsals.

☎ 020 8871 8172
www.enablelc.org/wilditch

WINCHESTER HOUSE

10 Lower Richmond Road,
Putney, SW15 5AG

This elegant private members' club on the banks of the River Thames has several rooms suitable for meetings and conferences, with gardens leading down to the water.

☎ 020 3819 6290
www.winchesterhouseevents.co.uk

Handy Council

36

business contacts

Building Control: Ensures reasonable standards of construction, as well as health and safety for people in and around buildings.

☎ 020 8871 7620

E: buildingcontrol@wandsworth.gov.uk

Brightside:

Wandsworth Council's magazine containing a range of information about services and events. Advertising is available for local businesses.

E: jkettle@wandsworth.gov.uk

Business Rates: These are charged on most non-domestic properties such as shops, offices, pubs and factories. They contribute towards the cost of local services.

☎ 020 7378 5941

E: brates@wandsworth.gov.uk

Economic Development Office (EDO):

Provides a number of services to businesses directly, and also works alongside other Council services and with local partners that provide support and advice to businesses.

☎ 020 8871 6884

E: egeneric@wandsworth.gov.uk

Environmental Services:

Responsible for the conservation and improvement of the environment. It is also responsible for enforcement, advice and educational health and trading standards legislation.

☎ 020 8871 6127

E: esd@wandsworth.gov.uk

Graffiti: Report graffiti and give us permission to remove it.

☎ 020 8871 8364

E: graffiti@wandsworth.gov.uk

Filming: Enable Leisure & Culture manage the Film Office on behalf of Wandsworth Council. It offers a one-stop service for all filming needs.

☎ 020 8871 7119

E: hello@enablelc.org

Food Safety: Responsible for enforcing food safety legislation/ensuring that all food sold to the public is safe.

☎ 020 8871 6127, Option 5

E: foodsafety@wandsworth.gov.uk

Licensing:

Responsible for all forms of licensing.

☎ 020 8871 6127, Option 4

E: licensing@wandsworth.gov.uk

Parking: For information on parking in the Borough, parking permits and suspensions.

☎ 020 8871 8871

parking enforcement enquiries

E: parking@wandsworth.gov.uk

parking permits enquiries

E: parkingpermits@wandsworth.gov.uk

long-term parking suspension

E: highwaylicences@wandsworth.gov.uk

Pest Control: Borough-wide pest control service.

☎ 020 8871 6127, Option 2

E: pestcontrol@wandsworth.gov.uk

Planning: Submit, view and comment on planning applications.

☎ 020 8871 7620

E: planning@wandsworth.gov.uk

Procurement: Find out about Council procurement and selling to the Council.

☎ 020 8871 6742 or 020 8871 5828

E: procurement@wandsworth.gov.uk

Trading Standards: Protect the public and maintain a fair and safe trading environment within Wandsworth.

☎ 020 8871 6127, Option 3

E: tradingstandards@wandsworth.gov.uk

Wandsworth Design and Print:

The council's in-house design and print studio offers high quality, competitive design and print buying service to local businesses.

☎ 020 8871-7508

E: wdp@wandsworth.gov.uk

Waste Services: Visit www.wandsworth.gov.uk/waste for more information on waste removal, street cleaning, reducing waste and recycling.

☎ 020 8871 8558

Work Match: Wandsworth Work Match works with local and national businesses to secure jobs for Wandsworth residents

☎ 020 8871 5191

E: wandsworthworkmatch@wandsworth.gov.uk

Picking Premises

Whether you're looking for co-working facilities, flexible office space, a commercial kitchen unit or just a desk, there are plenty of options in the borough.

ACCESS SELF STORAGE

249-251 Merton Road,
Wandsworth, SW18 5EB

Flexible office space for businesses of all sizes.

☎ 0203 733 9216

www.accessstorage.com/south-london/access-self-storage-wandsworth

ARGYLL HOUSE

All Saints Passage, London SW18 1EP

Relatively new business centre with office space for businesses of varying sizes.

☎ 020 3189 0089

www.abscentres.com/argyll-house.php

BATTERSEA STUDIOS

80-82 Silverthorne Road,
Battersea, SW8 3HE

A vibrant business centre offering work spaces for teams of three to 100.

☎ 020 7009 2300 and 020 7924 4476

www.battersea-studios.com

EARLSFIELD BUSINESS CENTRE

9 Lydden Road, Earlsfield, SW18 4LT

A range of offices, co-working, studios and workspace units available.

☎ 020 3142 7000

www.bca.uk.com/centre/earlsfield-business-centre

HYDE PARK HOUSE BUSINESS CENTRE

Manfred Road, Putney, SW15 2RS

Serviced office space.

☎ 0800 515 622

www.lentabusinesscentres.co.uk/serviced-office-space/putney

KITCHUP

Find commercial kitchen space to rent.

E: info@kitchup.co.uk

www.kitchup.co.uk

LAMBERT SMITH HAMPTON

United Kingdom House,
180 Oxford Street, London W1D 1NN

Wandsworth Council contracts out the management of the business premises it owns to Lambert Smith Hampton.

☎ 020 7198 2000

www.lsh.co.uk

LE BUREAU

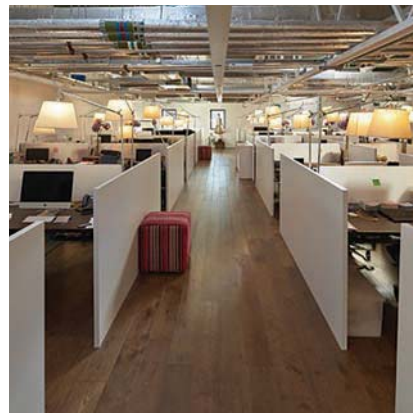
Studio F7 and F8,
Battersea Studios,
80 Silverthorne Road, SW8 3HE

Boutique co- working space with more than 200 desks.

☎ 020 7043 2415

www.lebu.co.uk

(pictured)



NEW COVENT GARDEN MARKET

London, SW8 5BH

Offers space to businesses in the food and flower related industries.

☎ 020 7720 2211
www.newcoventgardenmarket.com

OREGA (WANDSWORTH)

1 Hardwick's Square,
 Hardwick's Way,
 Wandsworth, SW18 4AW

Serviced offices and well-equipped meeting rooms.

☎ 020 7198 8300
www.orega.com/serviced-offices/london-wandsworth

PENHURST HOUSE

352-356 Battersea Park Road,
 Battersea, SW11 3BY

Flexible office space for start-ups and existing companies situated five minutes from Clapham Junction station.

☎ 020 7978 0100
www.penhurst.co.uk

PLANTATION WHARF

Battersea, SW11 3TY

Modern, flexible office space (380 to 1,350 sq ft) and meeting rooms close to the river.

☎ 020 7924 4476 and 020 7470 7145
www.plantationwharf.london.com

RANDELL COMMERCIAL

The Old Print House,
 173 Northcote Road, SW11 6QE

Commercial property agency based in Battersea.

☎ 020 7135 2033

**<http://www.randellcommercial.uk>
 RIVERSIDE**

Bendon Valley,
 Earlsfield, SW18 4UQ

A mixture of light industrial, office and studio space, situated 600 metres from Earlsfield Station.

☎ 0845 287 5139
www.workspace.co.uk/workspaces/riverside

SAFESTORE - BATTERSEA PARK

Ingate Place, London, SW8 3NS

30 state-of-the-art office units that provide a cheaper alternative to a serviced offices.

☎ 020 7622 1000
www.safestore.co.uk/storage/london/battersea-park

SHAKESPEARE HOUSE

168 Lavender Hill, SW11 5TG

Fully-equipped serviced offices, meeting rooms and virtual offices in art deco surroundings, situated five minutes from Clapham Junction station.

☎ 020 7801 6200
www.shakespearehouse.co.uk

SHARE DINING

Find or rent out unused commercial kitchen space.

info@sharedining.co.uk
www.sharedining.co.uk

THE LIGHT BULB

1 Filament Walk,
 Wandsworth, SW18 4GQ

New studios and co-working spaces ideal for start-ups and growing companies.

☎ 0845 287 5139
www.workspace.co.uk/workspaces/

**the-lightbulb
 TRIDENT BUSINESS CENTRE**

89 Bickersteth Road,
 Tooting, SW17 9SH

Workshops, studios, office space, conference/meeting rooms and virtual office services.

☎ 020 8516 7700
www.tridentcentre.co.uk



THE
RES
IDENCE

NINE ELMS

**UNRIVALLED LUXURY. UNRIVALLED PRICES.
LONDON'S MOST EXCITING NEW RESIDENCE IS HERE**

Beautifully crafted 1, 2 and 3 bedroom apartments overlooking the River Thames and the US embassy. Superbly located in Zone 1 connecting you to the best of London in minutes.

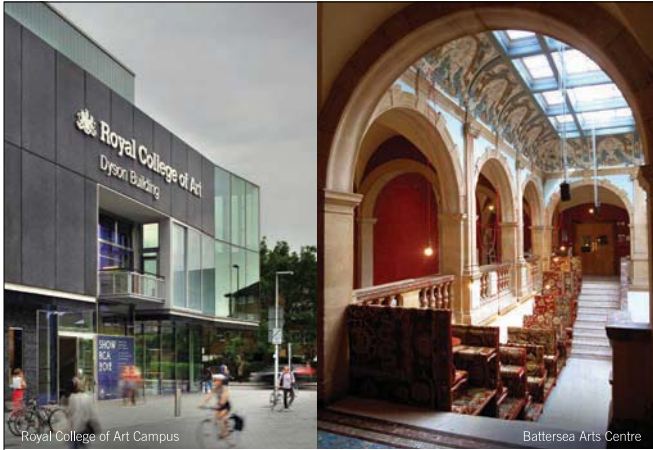
CALL: 0203 092 9677

Bellway

WWW.BELLWAY.CO.UK

PRICES TO BE CONFIRMED. COMPUTER GENERATED IMAGE IS INDICATIVE ONLY.

3037550



Haworth Tompkins Limited
33 Greenwood Place
London NW5 1LB
T + 44(0) 20 7250 3225

info@haworthtompkins.com
www.haworthtompkins.com

**Haworth
Tompkins**

3037836



DOWNING

Downing - delivering inspirational developments

For over three decades, Downing has steadily built its education portfolio creating inspirational student accommodation and facilities.

We are significantly expanding our presence across the UK and delivering in excess of £700m new landmark schemes in the UK's most prestigious cities.



Atlas

The Atlas development is a striking addition to Downing's student accommodation portfolio. The development will transform a vacant brownfield site in the heart of Vauxhall and Nine Elms in Zone One once completed in 2018.

0151 707 2666 | www.downing.com | www.downingstudents.com

3038280

L&G Facilities
Management
Services

www.lewis-graves.co.uk

Wherever your location, Lewis & Graves have a range of services to cover any requirement



We are a trusted and very experienced contractor. We manage Daily & Periodic cleaning contracts in both the public and private sectors, educational buildings & many London boroughs and local authorities.

Our services include

- Daily Educational Building Cleaning
- Periodic / Deep Cleaning
- Training
- Decontamination / Infection Control
- Facilities Management
- Painting & Decorating
- Carpet Cleaning
- Emergency Cleaning Services
- Window Cleaning
- Kitchen Deep Cleans
- Grounds Maintenance

**90% OF CUSTOMERS
WOULD RECOMMEND
THE SERVICES PROVIDED
BY LEWIS & GRAVES***

*Lewis & Graves Client Satisfaction Survey – March 2016

The biosecurity experts **STERI-7**

For more information please contact:
Head Office - 0208 519 9990 or e-mail jkling@lewis-graves.co.uk

3037554

**FREE
LISTINGS
FOR LOCAL
BUSINESSES**

Search for suppliers and services

Local business can add their details to the online version for free just go to
www.itslocalwandsworth.co.uk



**The
Parklife
Building**

Reasons to be Cheerful...

- ❶ **80,000 sq ft offices**
- ❷ **Brand new space**
- ❸ **Parkside setting**

... Coming soon



A BRAND NEW WAY TO WORK
THEPARKLIFEBUILDING.COM



Stuart Austin
stuart.austin@eu.jll.com
+44 20 3147 1112

Simon Fitch
simon.fitch@bnpparibas.com
+44 20 7338 4233

3037621

mbna
thames clippers

The fastest and most frequent fleet on the river



Serving piers across London, from Putney in the west to Woolwich in the east, MBNA Thames Clippers get you where you need to be

Enjoy comfortable seating and licensed on-board bars

Touch in and out using contactless or Oyster to pay as you go

thamesclippers.com

@thamesclippers

/thamesclippers

/thamesclippers



3037549





**PESTANA
CHELSEA BRIDGE**

PREMIUM
HOTEL & SPA
LONDON · UK

LONDON FROM A
DEFINITELY *Different* VIEW

Affordable luxury | Superb meeting facilities

World class facilities in a unique London city location makes Pestana Chelsea Bridge Hotel & Spa an ideal meetings, events and business traveller choice. 217 luxury 4* rooms offer spacious, well appointed accommodation and eight meeting venues catering from 10 to 500 delegates.

THE TIME
OF YOUR LIFE

For further information or enquiries
contact **+44 (0) 207 062 8060**
or email: events.uk@pestana.com
www.pestana.com



PESTANA
HOTELS & RESORTS



Market leaders in modular construction

London
0203 773 4101



Smarter, faster, quality construction



VISION
MODULAR SYSTEMS UK LTD

Bedford
01234 845 640
www.visionmodular.com

3037797



BESPOKE WINDOWS & DOORS • COMBINING HERITAGE VALUES AND MODERN DESIGN

☎ 0208 397 8666

🖱 www.sashwindowslondonltd.co.uk

@ info@sashwindowslondonltd.co.uk

Check our reviews



Checkatrade.com





Mushkil Aasaan

Care by the Community for the Community

Mushkil Aasaan is committed to upholding the rights and dignity of the individual and the family. This is within a holistic model of support, embracing diversity while addressing inequalities through community representation, development, and advocacy. Specialising in providing a spectrum of services:-

- ❖ CQC Regulated Domiciliary Care Services
- ❖ Pan London NHS Continuing Healthcare
- ❖ Advice, Information and Advocacy
- ❖ Counselling and Psychological Therapies
- ❖ Volunteering
- ❖ Support Groups & Forums
- ❖ Training, Employment and Career Development



220 Upper Tooting Road SW17 7EW
Tel 020 8672 6581

Registered Charity No: 1080666
Company LTD No: 3810948 CQC No: 1-101644212

3037593

juliusrutherfoord
LONDON CLEANING SERVICES

Creating Amazing Environments

Since 1994, we have provided an award-winning office contract cleaning service to London. Operating from our Battersea home, our passionate teams deliver personalised solutions to your cleaning needs, creating meticulous environments that increase the safety and wellbeing of those who interact with them.

WE ARE HERE

✉ sales@julius-r.co.uk ☎ 020 7819 6700 🌐 www.julius-r.co.uk

👤 j_rutherfoord 📞 julius-rutherfoord

📍 The Tramshed, 12 Ingate Place, Battersea, London, SW8 3NS

3037868



Great Transformations by MNM Property Services Limited



Unit 30 Cygnus Business Centre, Dalmeyer Road NW10 2XA
Tel: 020 8451 5500 • Fax: 020 8451 5522
info@mnmproperties.co.uk • www.mnmproperties.co.uk

3037555



RESIDENTIAL HOME

335 Ewell Road
Surbiton
Surrey
KT6 7BZ

Tel: 020 8390 4183

Rosclare is an attractive double fronted Victorian house which has been converted into a bright and cheerful care home since 1978. It is situated in Tolworth, Surbiton a few minutes walk from the Tolworth shopping centre. We offer 19 single occupancy rooms and most with en-suite toilets.

Rosclare offers a responsive, caring and homely care service for 19 residents who are frail, elderly or people with dementia. We offer 24 hour care to meet individual needs focusing on positive outcomes for each resident. Our staff are trained and skilled in responding to individual needs and especially those with dementia.

Visit our home to experience the caring and homely atmosphere at Rosclare.

3037725



**BATTERSEA
ARTS CENTRE**

SUPPORTING WANDSWORTH BUSINESS

Are you looking to organise an event, need catering, have tickets to sell? Look no further!



EVENTS

Our Grade II* listed Victorian town hall is home to over 70 unique spaces, with a long history of hosting events. From elegant marble foyers, to cosy fireplace rooms, we offer the perfect creative environment for any private or corporate event.



BAR AND CATERING

Our skilled bar and catering team can plan, manage and provide for events that span from business breakfasts to family banquets. We also run bars and cater outside the building for clients as diverse as wedding couples and Battersea Power Station.



THE CREATIVE HUB

The Hub has 52 workspaces across an open studio and private offices with workshop, meeting space, reception and social areas. Set in a creative, sharing environment where working and setting up a business is playful, social, collaborative and fun.

BAC TICKETS

BAC TICKETS

Providing a straightforward ticketing service, we offer a local, honest and affordable box office service with the quality and expertise of a large ticketing agency.

enquiries@bac.org.uk

020 7326 8211

venues@bac.org.uk

Lavender Hill, London SW11 5TN

bac.org.uk

[@battersea_arts](https://www.instagram.com/battersea_arts)

THE AGENCY

We are also helping young local entrepreneurs to put their ideas into action by offering them funding and support from industry professionals and trained facilitators bac.org.uk/theagency



PRIME INVESTMENT OPPORTUNITIES
MARKETING SUITE AND SHOW APARTMENT AVAILABLE TO VIEW
PRICES FROM £559,000

Offering a selection of high specification 1, 2 and 3 bedroom apartments, duplex apartments, mews houses and townhouses in Battersea. The development is in a prime Zone 2 location within a 3 minute walking distance of Battersea Park and Queenstown Road train stations, offering easy connections into central London.

- 5 minutes to Victoria or 9 minutes to Waterloo by train
- 7 minutes' walk to future Battersea Power Station
- 24 hour Concierge
- Residents' gym
- Secure cycle storage
- Landscaped communal areas
- House price growth for Wandsworth was 40% over last 3 years, 26% over last 2 years, which is significantly higher than the greater London average*

**CONTACT US FOR MORE INFORMATION
 AND TO BOOK A VIEWING**
WWW.BATTERSEAEXCHANGE.COM
 020 3053 0746
BATTERSEAEXCHANGE@TAYLORWIMPEY.COM

SELLING AGENTS



Taylor
 Wimpey
 Central London



All information is correct at the time of going to print. CGI is indicative only. Times quoted are approximate and provided by Google maps and tfl.gov.uk *Source: Land Registry



**Embassy
gardens**

Apartments and retail spaces available
Book your appointment 020 3393 4536
EMBASSYGARDENS.COM

ECOWORLD
CREATING TOMORROW & BEYOND

ballymore.

A JOINT DEVELOPMENT

Wandle is proud to be developing new homes in Wandsworth. We are committed to tackling the shortage of good quality affordable housing



With a New Homes Strategy to deliver over 1,000 homes over the next five years we require:

- Sites 15 – 60 units
- Sites with or without planning
- New s106 partners
- Joint venture partners (60 units +)

Please get in touch to find out more...

Peter Beggan – Land Manager (New Business)
020 8682 7301 / 07908 375 756
wandsworth-land@wandle.com

www.wandle.com

wandle
NEW HOMES

IT'S LOCAL WANDSWORTH ONLINE BUSINESS DIRECTORY



- ✓ Market your business for **FREE!**
- ✓ **Search** for local companies
- ✓ Shop **Local** and support the **Wandsworth** economy!

The service can be accessed from mobiles and tablets by sending a text message **4wandsworth** to **88802**. There's no download or install to worry about.

Register your business for **FREE** at www.itslocalwandsworth.co.uk

Wandsworth Council is proud to be part of launching an exciting new service for businesses in Wandsworth, connecting local businesses with local customers, free of charge and keeping trade inside the local economy.



ONE
NINE
ELMS
LONDON

BY WANDA



INVESTING IN WANDSWORTH

One Nine Elms stands at the gateway to one of Europe's largest regeneration projects and one of London's most exciting city centre development opportunities.

Located on the south bank of the Thames, One Nine Elms couldn't be more central. Vauxhall is already a primary London transport hub, and more than £1 billion is being invested in upgrading connections to support the area's growth.

Founded in 1988, Dalian Wanda is China's biggest and best known developer. Their brand embodies luxury and style, with over 95 shopping malls, cinemas and an extensive portfolio of commercial and residential properties across China.

Wanda is embarking on a global expansion programme, investing in and developing landmark projects in London, Chicago, Beverly Hills, Sydney and Australia's Gold Coast.

The Wanda Vista London, which is part of One Nine Elms, will be the international debut of Wanda's luxury hotel brand. It represents an investment of £850 million by Wanda Group in the local area and will deliver major long term employment and economic benefits – providing training, apprenticeships and job opportunities for the borough.

WWW.ONENINEELMS.COM
WWW.WANDA-GROUP.COM

